

THIS DRAWING MAY BE USED ONLY FOR THE PURPOSE INTENDED AND ONLY WRITTEN DIMENSIONS SHALL BE USED

**NOTES**

1. THIS DRAWING IS TO BE READ IN CONJUNCTION WITH D101901/3004

2. DRAWING NOT TO BE SCALED

**MATERIALS AND FINISHES**

NEW DIAGONAL BRACING  
CHS GRADE S355 J26L  
STRUCTURAL STEEL TO BS EN 10210-1994  
GRADE 14302 STAINLESS STEEL BS EN 10081-1995

REPLACEMENT OF MISSING OR DAMAGED ELEMENTS  
PLAN BRACING AT ABUTMENTS GRADE EN-GJS-350-22-LT SPHEROIDAL GRAPHITE CAST IRON TO BS EN 1563:1997

HORIZONTAL RAILINGS GRADE EN-GJS-350-22-LT SPHEROIDAL GRAPHITE CAST IRON TO BS EN 1563:1997

ALTERNATIVELY USE HOT-ROLLED STEEL PLATE AND BAR SECTIONS TO BS EN 10025-1993

**PLATE BONDING**  
STEEL PLATES GRADE S275 J26L STRUCTURAL STEEL TO BS EN 10025-1993

BONDING MATERIAL SIKADUR 318PA EPOXY RESIN OR SIMILAR

**PA PARAPET**  
POSTS AND SUPPORT BRACKETS GRADE S275 J26L STRUCTURAL STEEL TO BS EN 10025-1993

HORIZONTAL RAILINGS GRADE 14302 STAINLESS STEEL BS EN 10081-1995

**PROTECTIVE PAINT SYSTEM NEW STEEL WORK**  
SUPERSTRUCTURE AND PARAPETS EPOXY ALUMINIUM DFT 100µm EPOXY MIO DFT 150µm POLYSILOXANE DFT 50µm (PRESENTLY GREEN)

**SUBRAILING**  
APPROXIMATELY 70mm OF 20mm NOMINAL BINDER COURSE TO BS 4487 30mm OF 6mm NOMINAL SURFACE COURSE TO BS 4987

LOCATIONS OF PARAPET POSTS CLARIFIED TO MATCH EXISTING LOCATIONS

DECK SECTION REVISED

TENDER ISSUE

Revision Details

Revision Number

Drawing Number

IRON BRIDGE RESTORATION PROJECT BRABYNS PARK, MARPLE

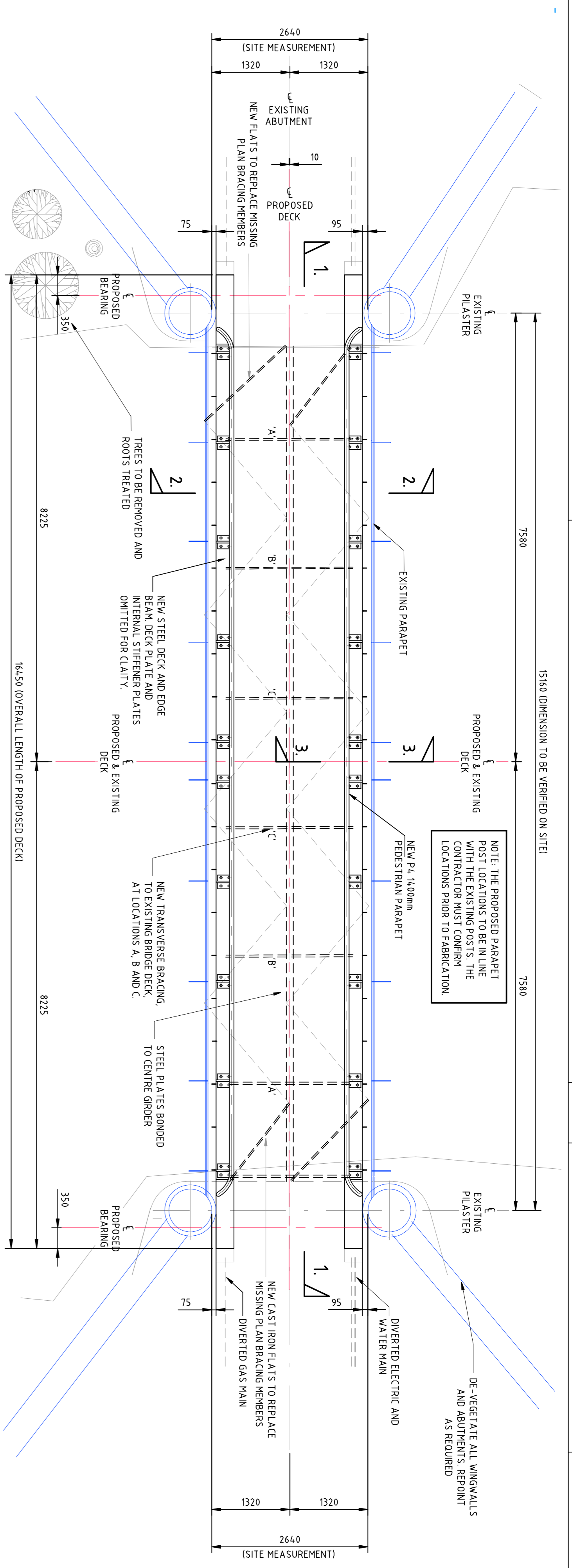
PROPOSED GENERAL ARRANGEMENT SHEET 1 OF 2

Scale at A1 AS SHOWN @ A1

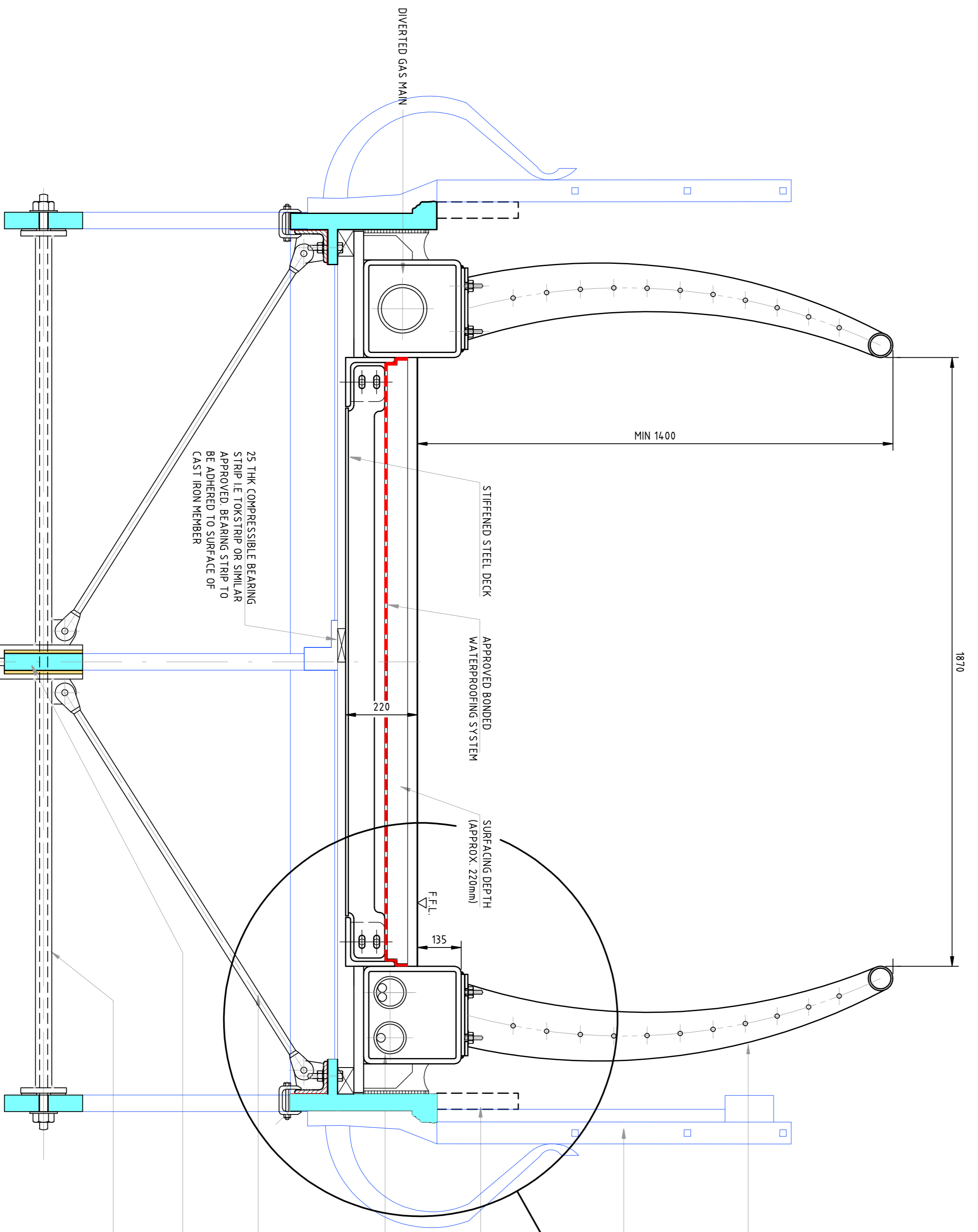
Drawn Decided Approved

Check Tech Check Dat Check Date

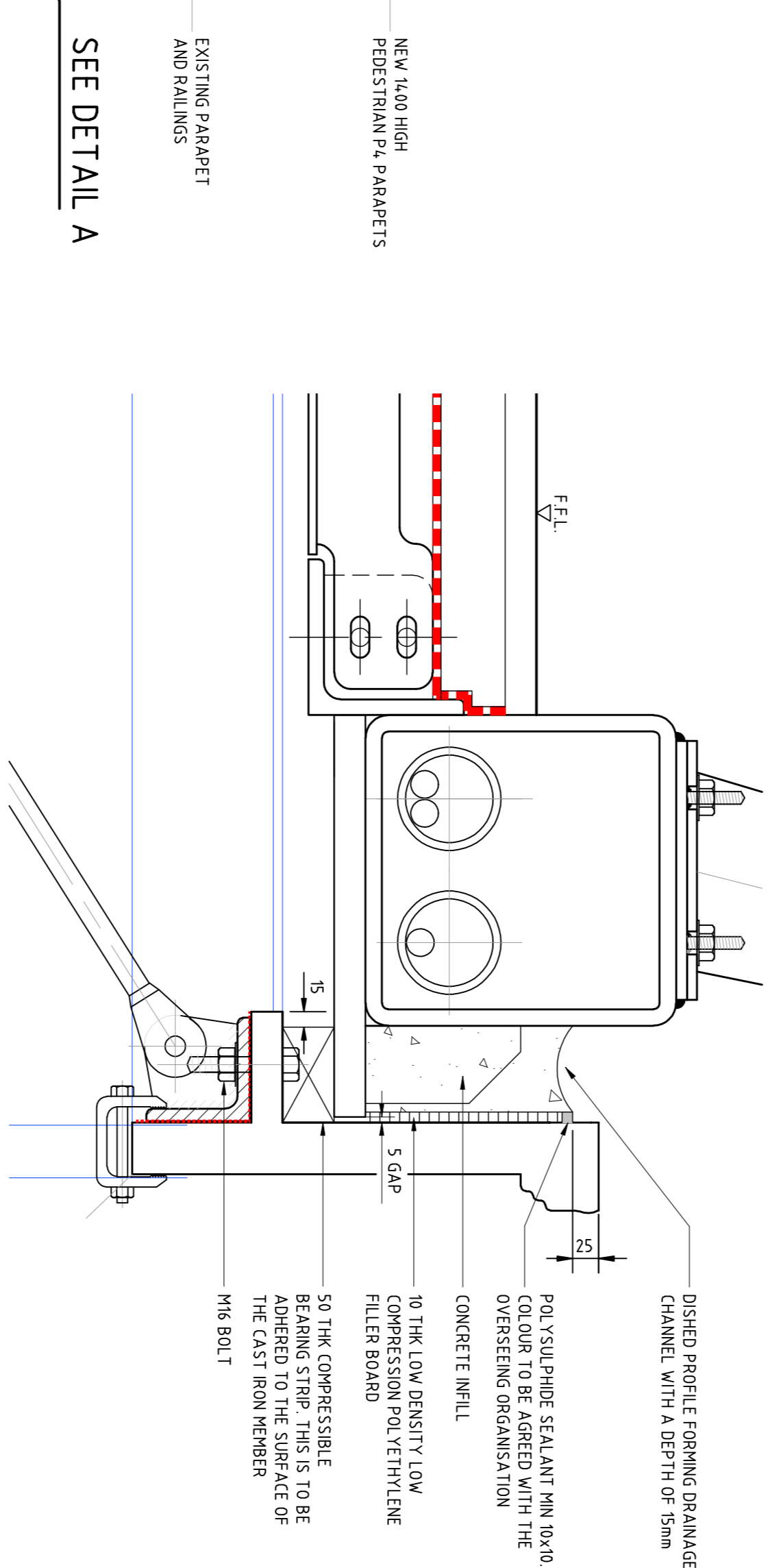
Scott Wilson Kirkpatrick St James's Buildings Manchester M1 5EF Telephone (0161) 236 8655 Fax (0161) 228 2581



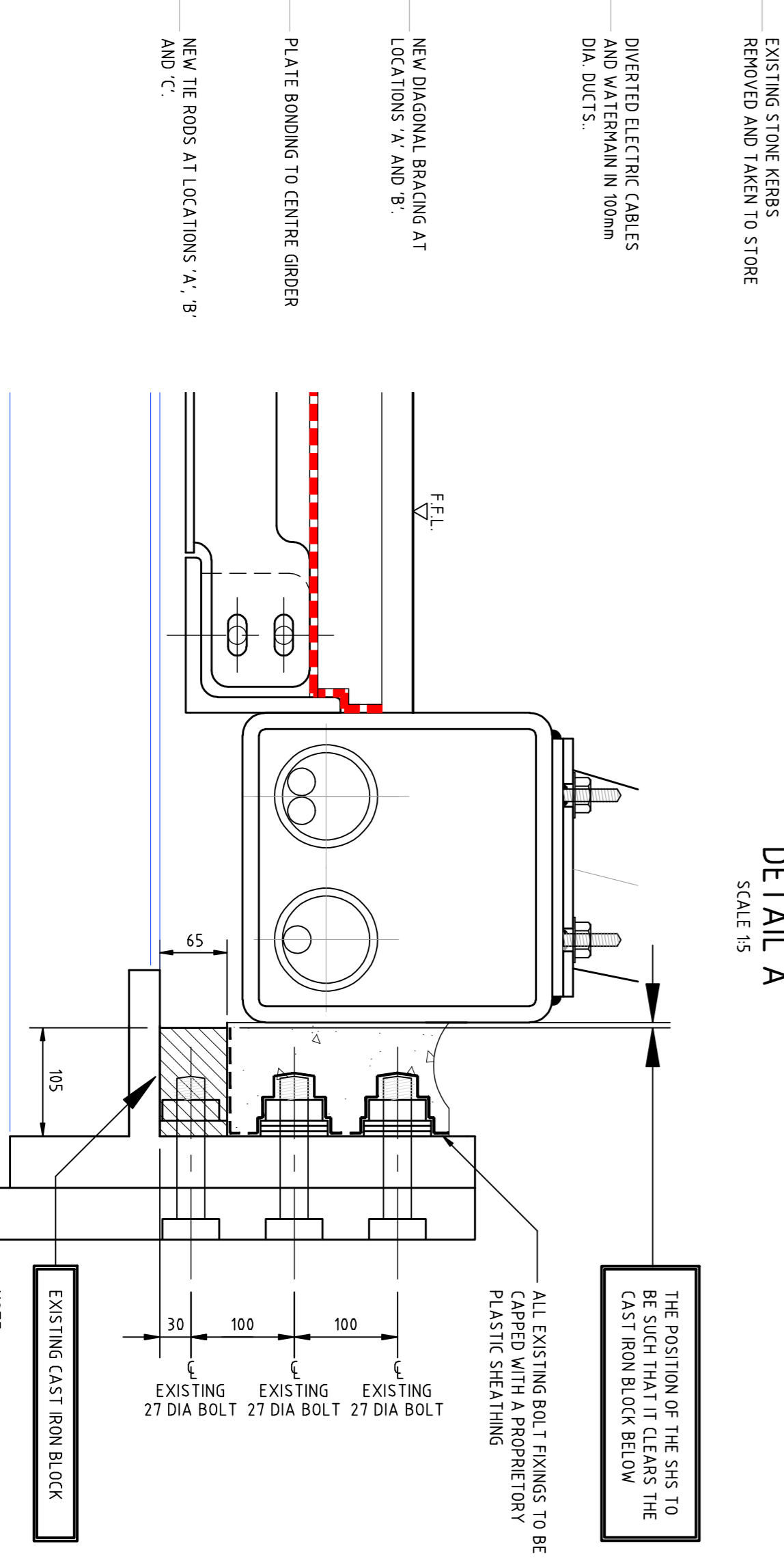
PLAN ON BRIDGE SCALE 1:50



SECTION 2-2. SCALE 1:10



DETAIL A SCALE 1:5



SECTION 3-3. AT MIDSPAN SCALE 1:5