

Marple Memorial Park Entrance Improvement Scheme

Following on from the public consultation earlier this year we are pleased to now bring you final details of the Memorial Park entrance improvement scheme.

Q Why is it being done and what does it involve?

A The scheme has been designed to improve access to the park especially for pedestrians; to improve visibility; and to improve safety. The scheme comprises:

- Realignment of the entrance/exit roads, the construction of a raised table and rumble strips to slow traffic down
- Widening of the footways and the provision of improved pedestrian crossing facilities
- Planting of new shrubs and trees
- Installation of bollards and new lighting

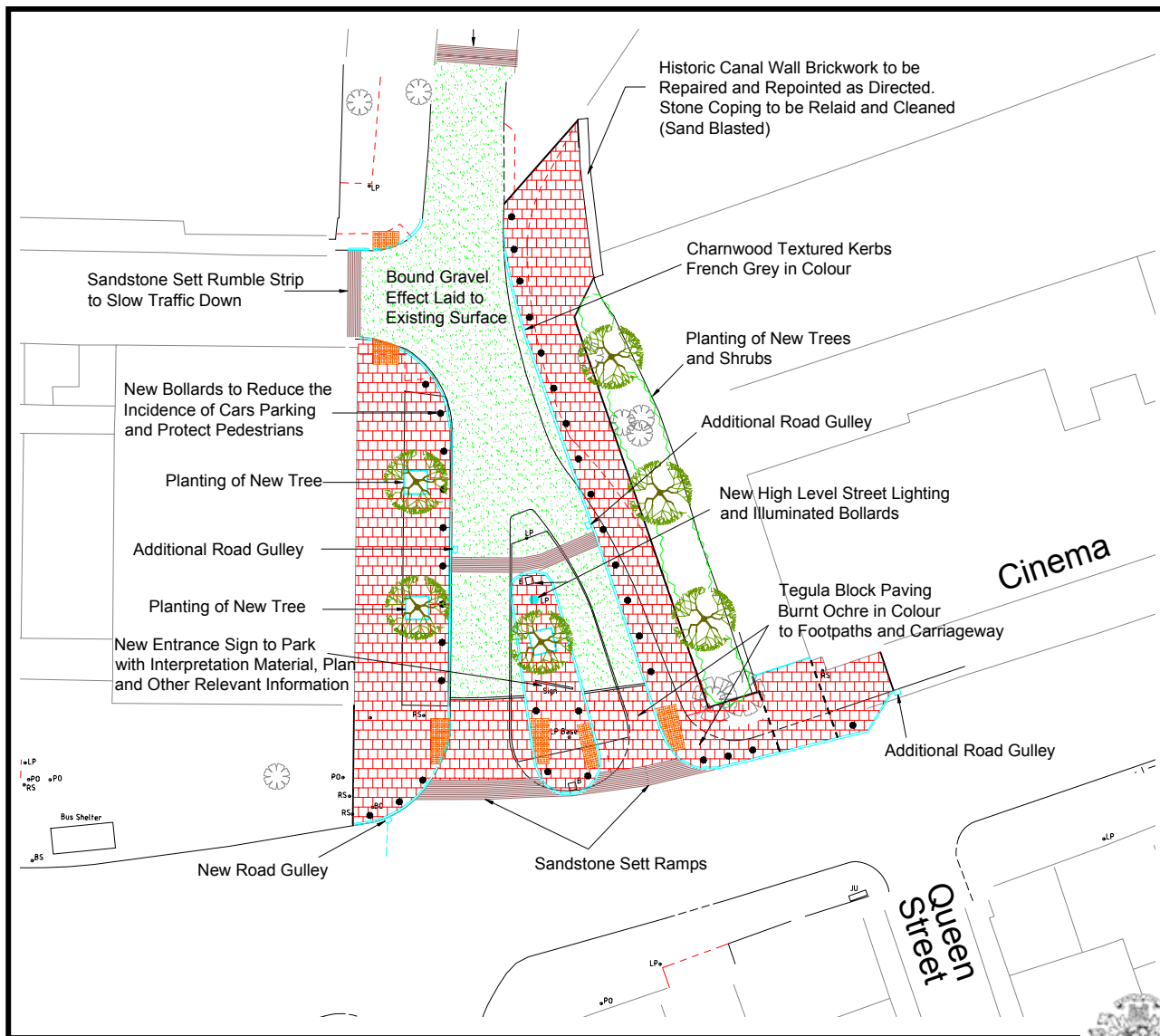


May we take this opportunity to apologise for any inconvenience the construction works may cause.



STOCKPORT
METROPOLITAN BOROUGH COUNCIL

Marple Memorial Park Entrance Scheme



Q When will the work start?



A The improvement works will start on 30 June and are expected to continue for approximately 8 weeks.

Q Will I still be able to get into the park from Stockport Road?

A Yes. Pedestrian access will be retained throughout the period of the works. If you are in a vehicle you will still be able to access from Stockport Road. Traffic leaving the park however will be temporarily diverted along the rear of the Hollins shops and out onto Hollins Lane.



Q Who can I contact for further information?

A If you have any queries please contact Roland Howard (Transportation & Health) on 474 4356 or Hannah Bowker (Regeneration Section) on 474 2636.



Other Marple District Centre Improvement Schemes

Market Street / Derby Way

Plans for refurbishment works to Market Street and Derby Way are also well underway. The scheme aims to make the area more accessible, safer and more pedestrian friendly and it is hoped that works can commence summer 2003.

Works are expected to include new paving, new seating and litter bins, new bollards and cycle racks, removal of planters and other outdated street furniture and new tree planting. Improved pedestrian links to Derby Way car park are also to be incorporated as part of the scheme.



Other future schemes include:

- Other pedestrian and road safety improvements
- Parking Improvements
- Improvements to public transport facilities
- Better cycling facilities

